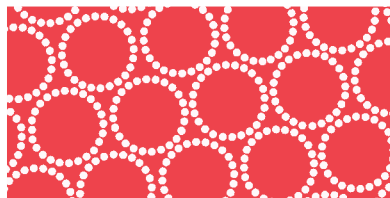


Mini Pearl Bracelets

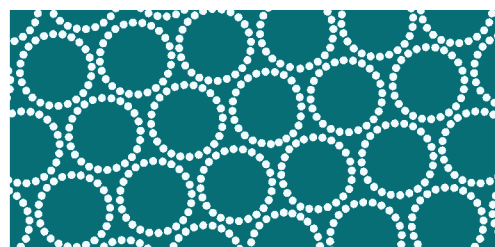
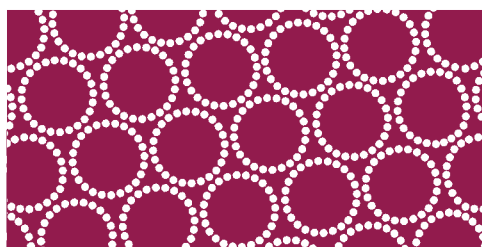
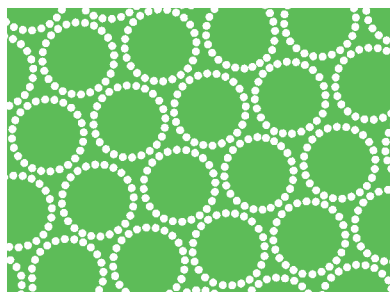
BY LIZZY HOUSE



Curly Q
Quilt Design:
Heidi Pridemore

Quilt Size: 58" x 70"

andoverfabrics.com



andover



makower uk
The Henley Studio

Free Pattern Download Available

1384 Broadway New York, NY 10018
Tel. (800) 223-5678 • andoverfabrics.com

Curly Q



Featuring Andover Fabrics new Collection: Mini Pearl Bracelets by Lizzy House

Quilt designed by Heidi Pridemore

Quilt finished 58" x 70"

Mini Pearl Bracelets is such a versatile group. These designs work for modern, traditional or whimsical quilts. For this group the curly-Q applique works wonderfully to showcase the different colors for the group.

Cutting Directions

Note: Read assembly directions before cutting patches. Borders are cut to exact length required plus $\frac{1}{4}$ " seam allowance. WOF designates the width of fabric from selvedge to selvedge (approximately 42" wide).

Fabric A Cut (4) 10 $\frac{1}{2}$ " x WOF strips. Sub-cut strips into (36) 4 $\frac{1}{2}$ " x 10 $\frac{1}{2}$ " strips.

Fabric B Cut (4) 10 $\frac{1}{2}$ " x WOF strips. Sub-cut strips into (36) 4 $\frac{1}{2}$ " x 10 $\frac{1}{2}$ " strips.
Cut (4) 2 $\frac{1}{2}$ " x WOF strips. Sew the strips together, end to end with diagonal seams, and cut (2) 2 $\frac{1}{2}$ " x 60 $\frac{1}{2}$ " strips.
Cut (3) 2 $\frac{1}{2}$ " x WOF strips. Sew the strips together, end to end with diagonal seams, and cut (2) 2 $\frac{1}{2}$ " x 52 $\frac{1}{2}$ " strips.

Fabric C Cut (7) 2 $\frac{1}{2}$ " x WOF strips for the binding.
See instructions to cut (6) Template 1 units.

Fabric D See instructions to cut (6) Template 1 units.

Fabric E See instructions to cut (6) Template 1 units.

Fabric F See instructions to cut (12) Template 1 units.

Fabric G See instructions to cut (6) Template 1 units.

Fabric Requirements

| | | Yardage | Fabric |
|-----------------|----------------|-----------------------|---------|
| Fabric A | background | 1 $\frac{1}{4}$ yards | 7829-C |
| Fabric B | background | 1 $\frac{3}{4}$ yards | 7829-WW |
| Fabric C | curls, binding | $\frac{3}{4}$ yard | 7829-P |
| Fabric D | curls | $\frac{1}{3}$ yard | 7829-E1 |
| Fabric E | curls | $\frac{1}{3}$ yard | 7829-B |
| Fabric F | curls | $\frac{1}{2}$ yard | 7829-G |
| Fabric G | curls | $\frac{1}{3}$ yard | 7829-Y1 |
| Fabric H | curls | $\frac{1}{3}$ yard | 7829-E |
| Fabric I | curls, borders | 1 yard | 7829-T1 |
| Fabric J | curls | $\frac{1}{3}$ yard | 7829-W |
| Fabric K | curls | $\frac{1}{3}$ yard | 7829-R |
| Fabric L | curls | $\frac{1}{3}$ yard | 7829-O |
| Fabric M | curls | $\frac{1}{3}$ yard | 7829-T |
| Backing | | 4 yards | 7829-WW |

Fabric H See instructions to cut (6) Template 1 units.

Fabric I Cut (4) 3 $\frac{1}{2}$ " x WOF strips. Sew the strips together, end to end with diagonal seams, and cut (2) 3 $\frac{1}{2}$ " x 64 $\frac{1}{2}$ " strips.
Cut (3) 3 $\frac{1}{2}$ " x WOF strips. Sew the strips together, end to end with diagonal seams, and cut (2) 3 $\frac{1}{2}$ " x 58 $\frac{1}{2}$ " strips.
See instructions to cut (6) Template 1 units.

Fabric J See instructions to cut (6) Template 1 units.

Fabric K See instructions to cut (6) Template 1 units.

Fabric L See instructions to cut (6) Template 1 units.

Fabric M See instructions to cut (6) Template 1 units.

Backing Cut (2) 66" x WOF strips. Sew the strips together and trim to make (1) 66" x 78" backing.

You will also need:

Fusible Web

Curly Q

Making the Quilt

1. Block Assembly

Following the manufacturer's instructions, trace the listed number of each template onto the paper side of the fusible web. Roughly cut out each template about $\frac{1}{8}$ " outside the drawn lines.

2. Press each template onto the wrong side of the fabrics as listed on the templates. Cut out each template on the drawn lines.
3. Refer to the quilt photo to arrange and press (1) Fabric C-Template 1 unit onto (1) $4\frac{1}{2}$ " x $10\frac{1}{2}$ " Fabric B strip. Repeat to press (1) Fabric D-Template 1 unit onto (1) $4\frac{1}{2}$ " x $10\frac{1}{2}$ " Fabric A strip but rotate the unit 180 degrees.
4. Finish the raw edges of each shape with a decorative stitch such as a buttonhole or satin stitch.
5. Sew the Fabric B strip and Fabric A strip together, lengthwise, to make (1) Block One. Repeat to make (6) Block Ones total.
6. Repeat Steps 3-5 using the chart below to identify the fabrics to make the designated number of blocks:

| Template 1/Fabric B | Template 1 (Rotated)/Fabric A | # of blocks |
|---------------------|-------------------------------|---------------|
| (6) Fabric E | (6) Fabric F | (6) Block 2's |
| (6) Fabric G | (6) Fabric H | (6) Block 3's |
| (6) Fabric I | (6) Fabric J | (6) Block 4's |
| (6) Fabric K | (6) Fabric L | (6) Block 5's |
| (6) Fabric F | (6) Fabric M | (6) Block 6's |

7. Quilt Top

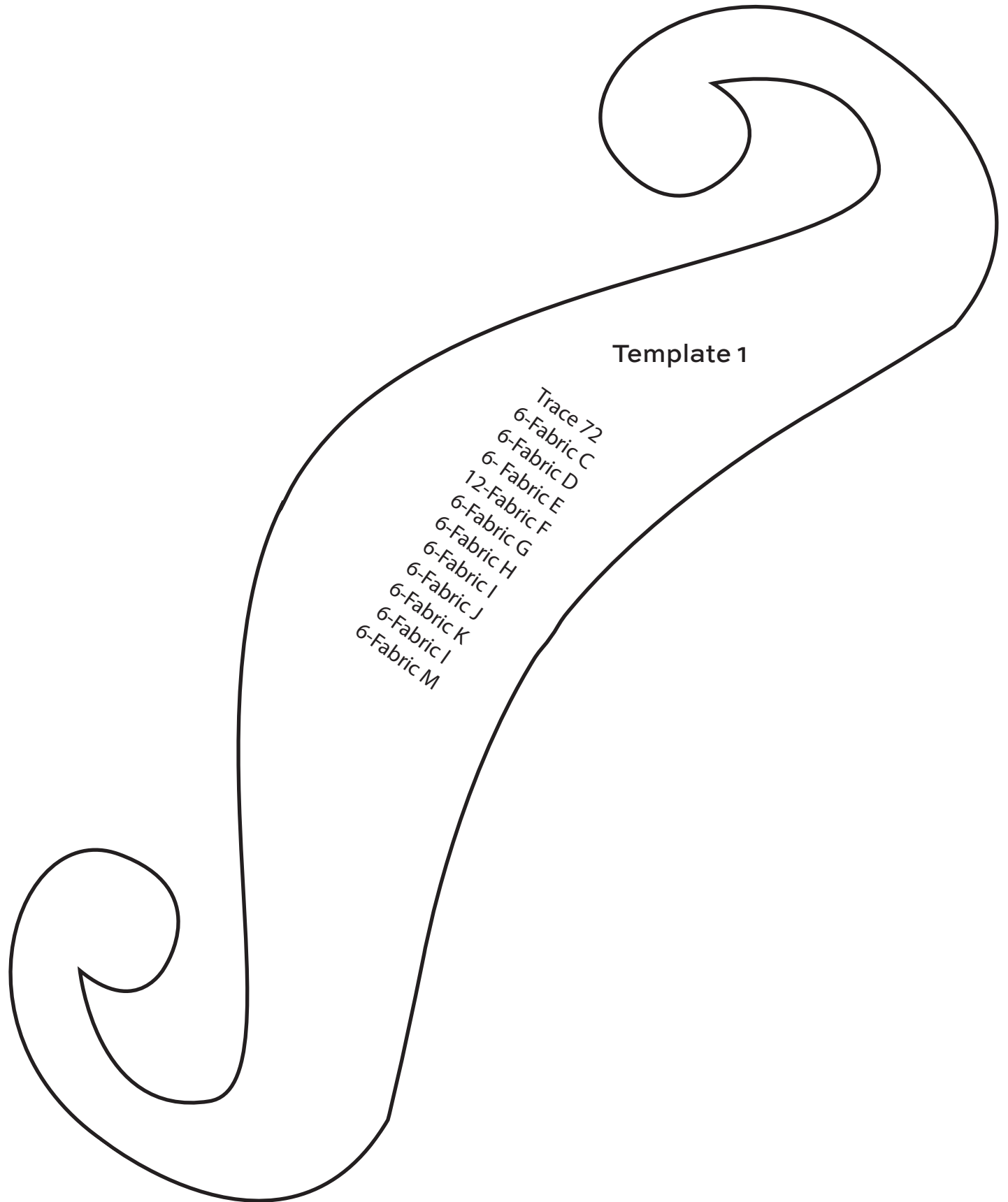
(Refer to quilt photo when assembling the quilt top.)

Sew (6) assorted blocks together, lengthwise, to make (1) row. Pay attention to the orientation of the blocks to ensure that Fabric A and Fabric B background strips are alternated. Repeat to make (6) rows.

8. Sew the six rows together to make the quilt top. Pay attention to the orientation of the rows.
9. Sew (1) $2\frac{1}{2}$ " x $60\frac{1}{2}$ " Fabric B strip to each side of the quilt top. Sew (1) $2\frac{1}{2}$ " x $52\frac{1}{2}$ " Fabric B strip to the top and to the bottom of the quilt top.
10. Sew one $3\frac{1}{2}$ " x $64\frac{1}{2}$ " Fabric I strip to each side of the quilt top. Sew (1) $3\frac{1}{2}$ " x $58\frac{1}{2}$ " Fabric I strip to the top and to the bottom of the quilt top.

Finishing the Quilt

8. Layer and quilt as desired.
9. Sew the (7) $2\frac{1}{2}$ " x WOF Fabric C strips together, end to end with a 45-degree seams, to make the binding. Fold this long strip in half lengthwise with wrong sides together and press.
10. Bind as desired.

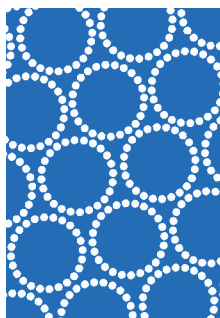


Template 1

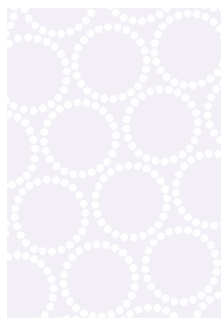
- Trace 72
- 6-Fabric C
- 6-Fabric D
- 6-Fabric E
- 12-Fabric F
- 6-Fabric G
- 6-Fabric H
- 6-Fabric I
- 6-Fabric J
- 6-Fabric K
- 6-Fabric I
- 6-Fabric M

Mini Pearl Bracelets

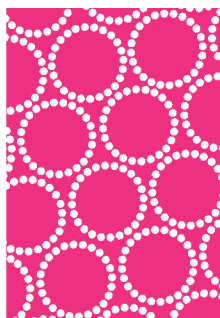
BY LIZZY HOUSE



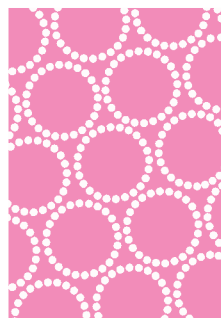
7829-B 1/3 yd



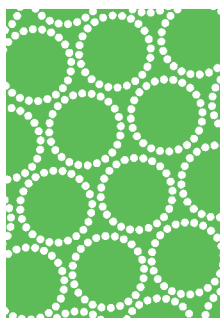
7829-C 1 1/4 yds



7829-E 1/3 yd



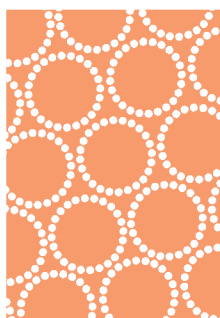
7829-E1 1/3 yd



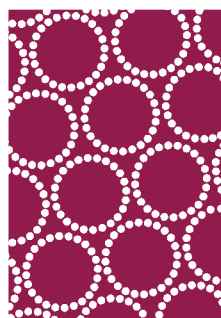
7829-G 1/2 yd



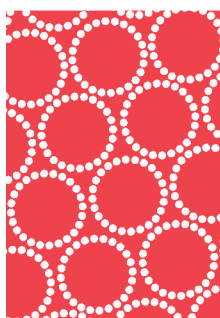
7829-L



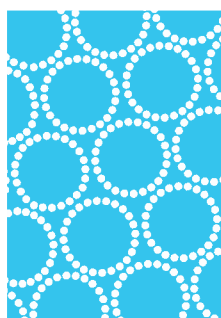
7829-O 1/3 yd



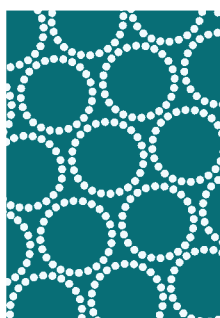
7829-P 3/4 yd
(includes binding)



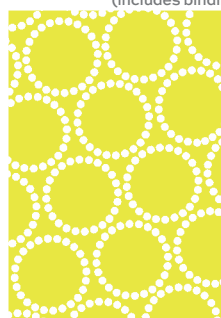
7829-R 1/3 yd



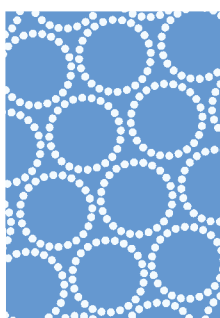
7829-T 1/3 yd



7829-T1 1 yd



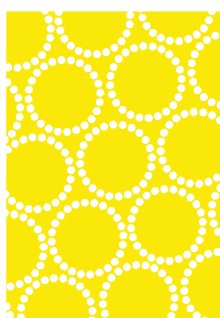
7829-V



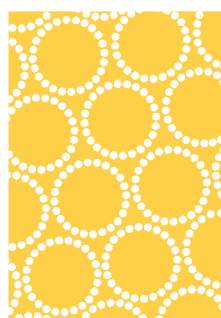
7829-W 1/3 yd



7829-WW 5 3/4 yds
(includes backing)



7829-Y



7829-Y1 1/3 yd

FABRICS 5 kits 10 kits 20 kits

7829-C 1 1 2

7829-WW 1 2 3

7829-P 1 1 1

7829-E1 1 1 1

7829-B 1 1 1

7829-G 1 1 1

7829-Y1 1 1 1

7829-E 1 1 1

7829-T1 1 1 2

7829-W 1 1 1

7829-R 1 1 1

7829-O 1 1 1

7829-T 1 1 1

BINDING FABRIC

7829-P 1 1 1

YARDAGE FOR BINDING: 1/2 YD PER KIT

BACKING FABRIC

7829-T1 2 3 6

YARDAGE FOR BACKING: 4 YDS PER KIT

*Fabrics shown are 25% of actual size.

About Our Fabrics

A recognized leader in the quilting industry, Andover Fabrics features designs by a wide variety of talented fabric artists. Catering to the tastes of creative and dedicated quilters, Andover has a style for every look — authentic reproductions, romantic florals, exotic Orientals, ethnic influence, whimsical, funky, playful or basic. Collections are supported with "free-to-use" patterns on their website.

andover

makower uk
The Henley Studio

Free Pattern Download Available

1384 Broadway New York, NY 10018
Tel. (800) 223-5678 • andoverfabrics.com